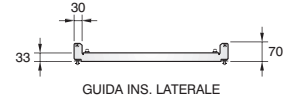
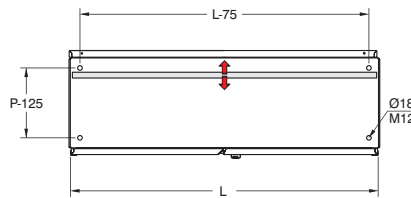
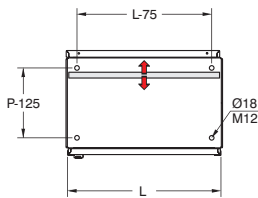
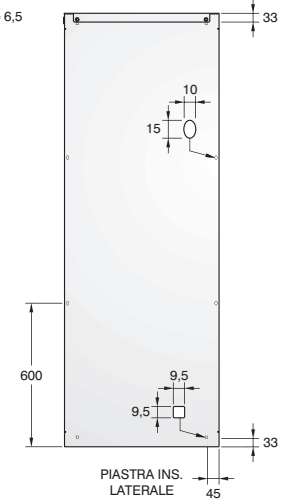
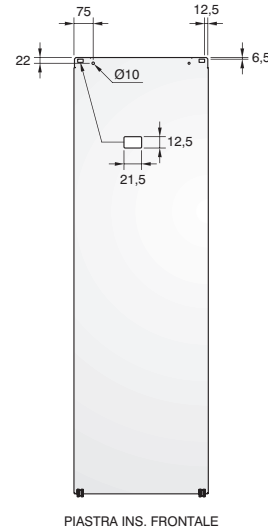
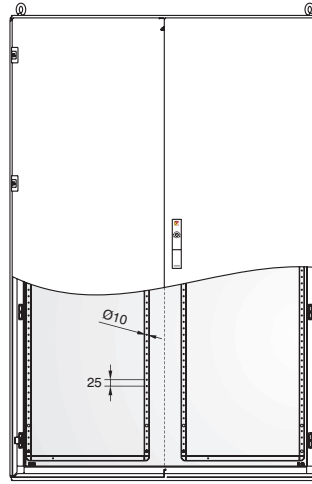
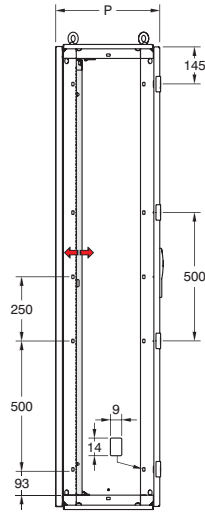
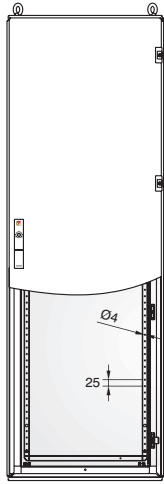
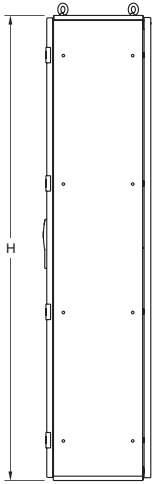
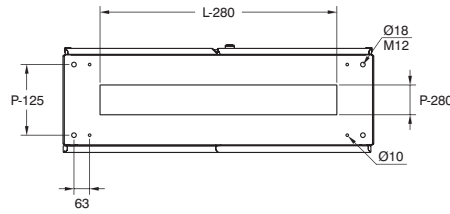
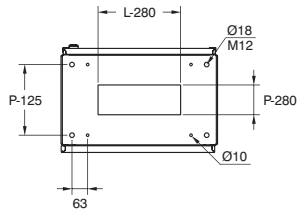


Armadi DRC 1 e 2 ante: Dimensioni larghezza con fianchi montati +10mm
 Uniti in batteria +2mm (per ciascuna coppia di moduli)



NB Contattare l'ufficio tecnico per uso esterno

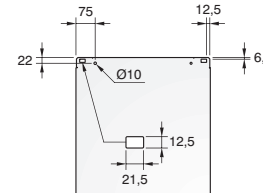
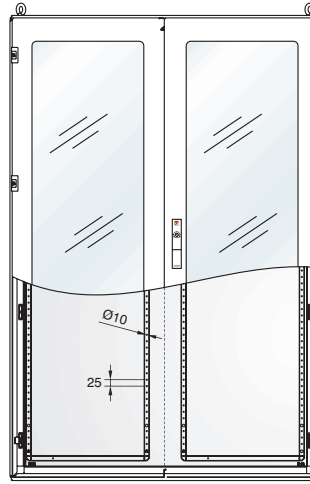
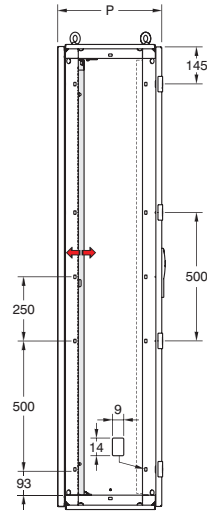
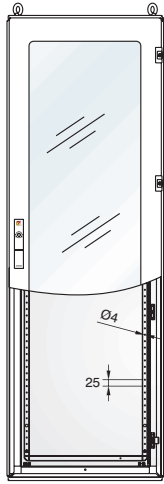
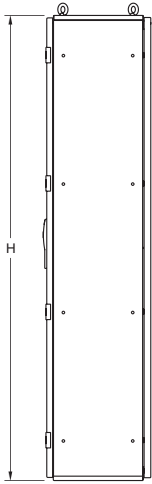
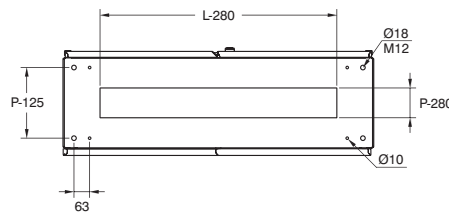
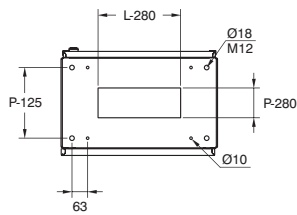
DIMENSIONI ARMADI DRC

Anta Unica.....	L-10	H-10
Anta Dx.....	½L+3	H-20
Anta Sx.....	½L-25	H-20
Utile Foratura Anta Unica.....	L-160	H-170
Utile Foratura Anta Dx.....	L anta-160	H-170
Utile Foratura Anta Sx.....	L anta-160	H-170
Utile Foratura/Passaggio Lat. s/Piastra...	P-150	H-110
Utile Foratura/Passaggio Lat. c/Piastra...	P-180	H-110
Luce Utile ad Ante Aperte.....	L-100	H-110
Piastra Interna Frontale.....	L-105	H-115
Piastra Inserimento Laterale.....	L-0	H-115
Superficie Utile Piastra Laterale.....	L-0	H(Piastra)-75
Profondita' Utile.....	P-105	
Utile Foratura Base.....	L-250	P-150
Utile Foratura Top.....	L-140	P-150
Utile Foratura Retro.....	L-110	H-130

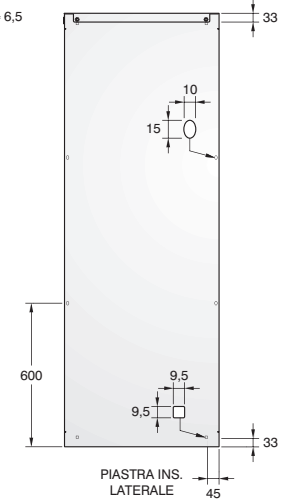
OMOLOGAZIONI

CE		EN 62208/02:2012	EN 61439-1
	IP 66	EN 62208/02:2012	EN 60 529 ; EN 61439-1
	Anta cieca: IK10	EN 62208/02:2012	EN 62 262 ; EN 61439-1
	Max Load Capacity	Pl. 900Kg Anta 90Kg	EN 62208/02:2012 EN 61439-1
	TYPE 1, 12	FILE E238294	Standard 508
	NEMA 1, 12		Standard 250
		ELE118311CS	Rina Rules Classification of Ships
		2011/65/CE	1272/2008/CE

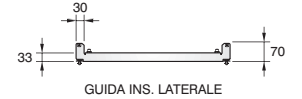
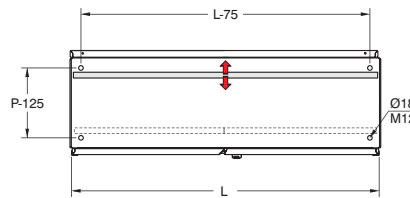
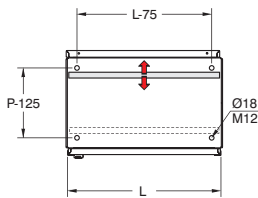
Armadi DRCP 1 e 2 ante vetro: Dimensioni larghezza con fianchi montati +10mm.
 Uniti in batteria +2mm
 Anta interna da ordinare con codice separato



PIASTRA INS. FRONTALE



PIASTRA INS. LATERALE



GUIDA INS. LATERALE

NB Contattare l'ufficio tecnico per uso esterno

DIMENSIONI ARMADI DRCP

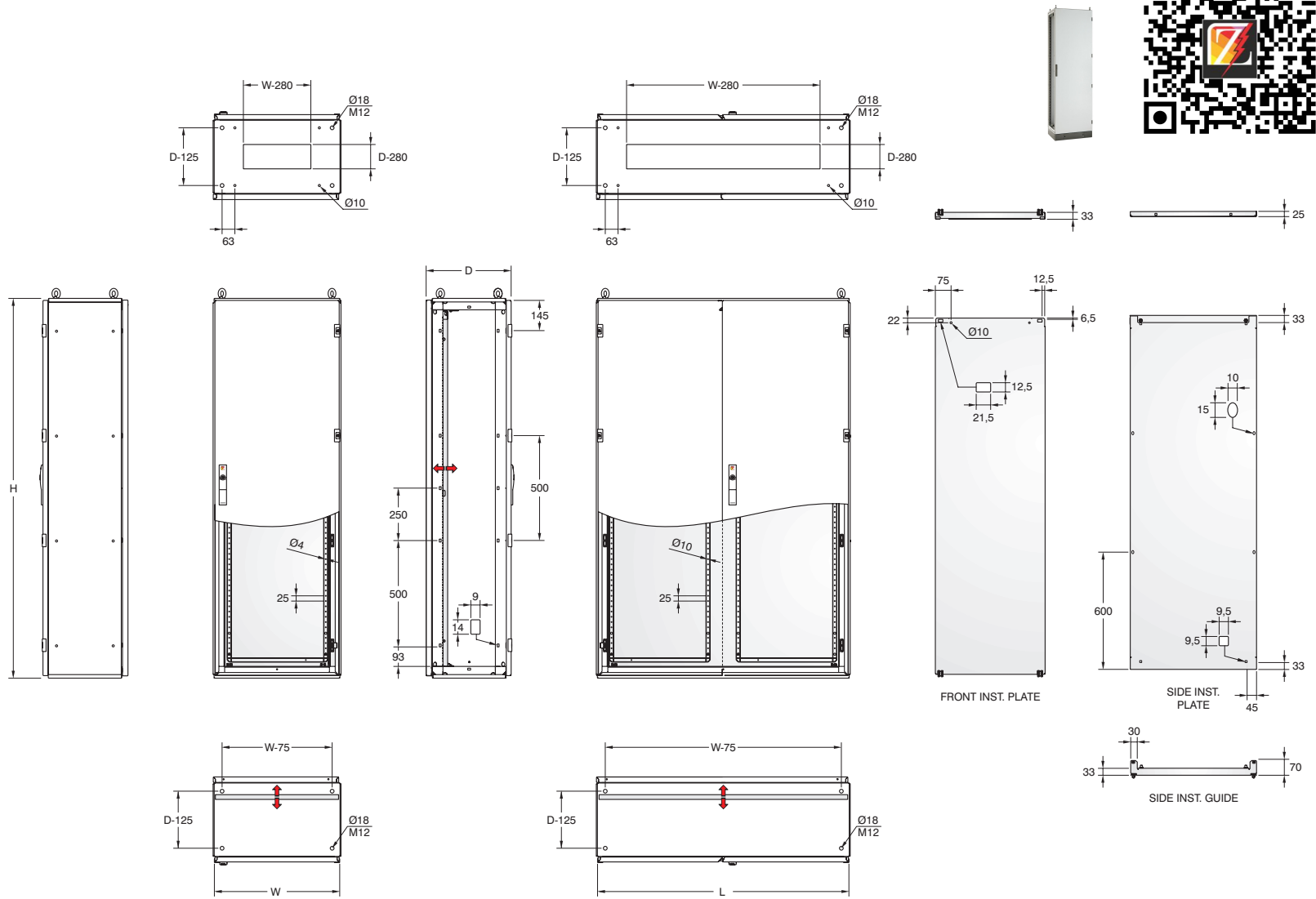
Anta Unica.....	L-10	H-10
Anta Dx.....	½L+3	H-20
Anta Sx.....	½L-25	H-20
Luce Anta Trasparente Unica.....	L-215	H-285
Luce Anta Trasparente Dx/Sx.....	L anta-190	H-285
Anta Interna Unica.....	L-135	H-145
Anta Interna Dx.....	½L-70	H-145
Anta Interna Sx.....	½L-70	H-145
Utile Foratura Anta Interna Unica.....	L-175	H-185
Utile Foratura Anta Interna Dx.....	L anta-40	H-185
Utile Foratura Anta Interna Sx.....	L anta-20	H-185
Utile Foratura/Passaggio Lat. s/Piastra...	P-150	H-110
Utile Foratura/Passaggio Lat. c/Piastra...	P-172	H-110
Luce Utile ad Ante Aperte.....	L-100	H-110
Piastra Interna Frontale.....	L-105	H-115
Piastra Inserimento Laterale.....	L-0	H-115
Superficie Utile Piastra Laterale.....	L-0	H(Piastra)-75
Profondita' Utile s/Anta Interna.....	P-105	
Profondita' Utile c/Anta Interna.....	P-177	
Distanza Anta Esterna/Anta Interna.....	70	
Utile Foratura Base.....	L-250	P-150
Utile Foratura Top.....	L-140	P-150
Utile Foratura Retro.....	L-110	H-130

OMOLOGAZIONI

CE		EN 62208/02:2012	EN 61439-1
TUV	IP 66	EN 62208/02:2012	EN 60 529 ; EN 61439-1
	Anta vetro: IK08	EN 62208/02:2012	EN 62 262 ; EN 61439-1
	Max Load Capacity	Pl. 900Kg	EN 62208/02:2012 EN 61439-1
		ELE118311CS	Rina Rules Classification of Ships
RoHS		2011/65/CE	1272/2008/CE

technical data: DRC cabinets

1 and 2 doors DRC cabinets: Width with side panels installed +10 mm
In in-line configurations +2 mm (for each module pair)



NB Contact the technical department for external use

DRC CABINETS DIMENSIONS

Single Door.....	W-10	H-10
R Door.....	1/2W+3	H-20
L Door.....	1/2W-25	H-20
Single Door Drill Dimensions.....	W-160	H-170
R Door Drill Dimensions.....	W	anta-160
L Door Drill Dimensions.....	W	anta-160
Drill Dimensions/Side Spacing with Plate.....	D-150	H-110
Drill Dimensions/Side Spacing without Plate.....	D-180	H-110
Opening Dimensions with Open Doors.....	W-100	H-110
Front Internal Plate.....	W-105	H-115
Side Installation Plate.....	W-0	H-115
Side Plate Useful Area.....	W-0	H(Plate)-75
Drill Depth.....	D-105	
Base Drill Dimensions.....	W-250	D-150
Top Drill Dimensions.....	W-140	D-150
Back Panel Drill Dimensions.....	W-110	H-130

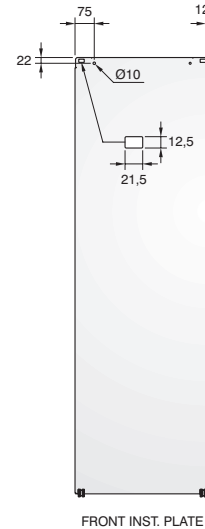
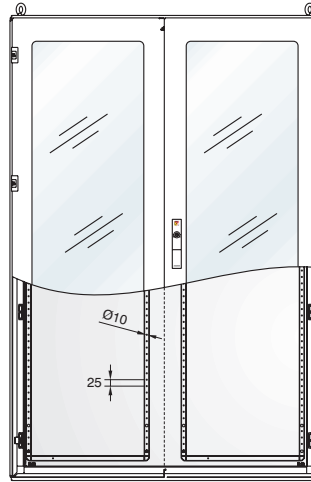
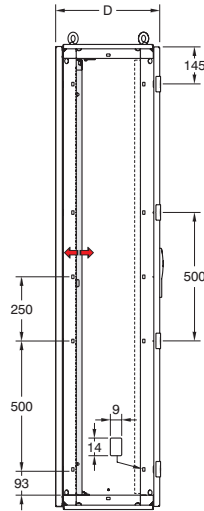
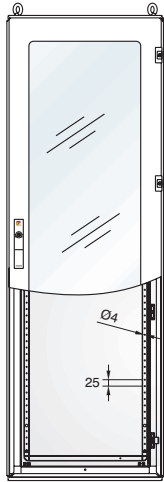
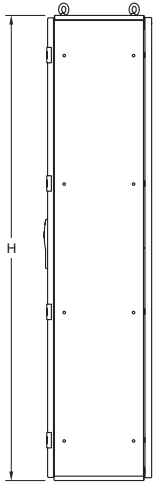
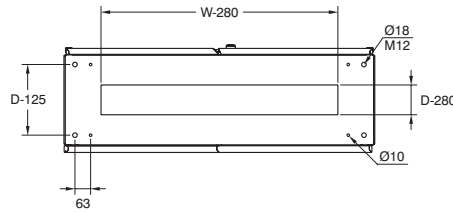
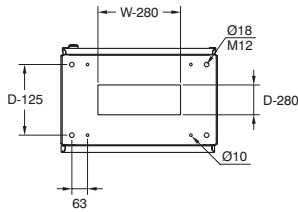
APPROVALS

CE		EN 62208/02:2012	EN 61439-1
TUV	*IP 55	EN 62208/02:2012	EN 60 529 ; EN 61439-1
	Solid door: IK10	EN 62208/02:2012	EN 62 262 ; EN 61439-1
	Max Load Capacity	Pl. 900Kg Door 90Kg	EN 62208/02:2012 EN 61439-1
UL US	TYPE 1, 12	FILE E238294	Standard 508
	NEMA 1, 12		Standard 250
		ELE118311CS	Rina Rules Classification of Ships
RoHS		2011/65/CE	1272/2008/CE

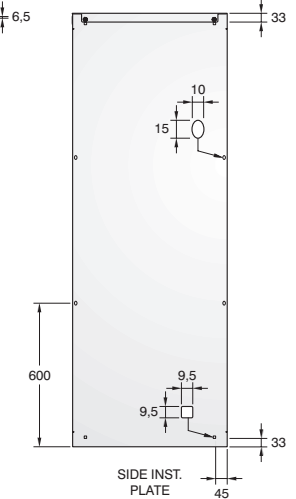
* IP66 WITH SINGLE, FLAT GROMMET FLANGE

technical data: DRCP cabinets

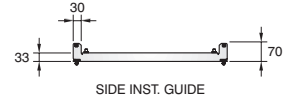
1 and 2 glass doors DRCP cabinets: Width with side panels installed +10 mm
 In in-line configurations +2 mm
 By separated code ordering: internal door



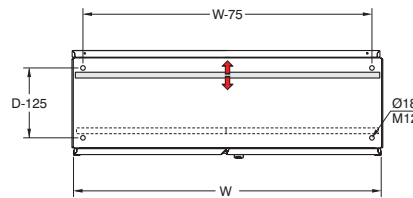
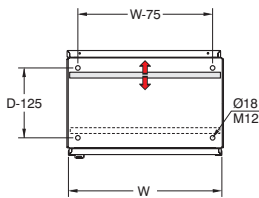
FRONT INST. PLATE



SIDE INST. PLATE



SIDE INST. GUIDE



NB Contact the technical department for external use

DRCP CABINETS DIMENSIONS

Single Door.....	W-10	H-10
R Door.....	½W+3	H-20
L Door.....	½W-25	H-20
Single Transparent Door Opening.....	W-215	H-285
R/L Transparent Door Opening.....	W door-190	H-285
Single Internal Door.....	W-135	H-145
R Internal Door.....	½W-70	H-145
L Internal Door.....	½W-70	H-145
Single Internal Door Drill Dimensions.....	W-175	H-185
R Internal Door Drill Dimensions.....	W door-40	H-185
L Internal Door Drill Dimensions.....	W door-20	H-185
Drill Dimensions/Side Spacing without Plate.....	D-150	H-110
Drill Dimensions/Side Spacing with Plate.....	D-172	H-110
Opening Dimensions with Open Doors.....	W-100	H-110
Front Internal Plate.....	W-105	H-115
Side Installation Plate.....	W-0	H-115
Side Plate Useful Area.....	W-0	H(Plate)-75
Drill Depth with Internal Door.....	D-105	
Drill Depth without Internal Door.....	D-177	
External-Internal Door Spacing.....	70	
Base Drill Dimensions.....	W-250	D-150
Top Drill Dimensions.....	W-140	D-150
Back Panel Drill Dimensions.....	W-110	H-130

APPROVALS

CE		EN 62208/02:2012	EN 61439-1
	*IP 55	EN 62208/02:2012	EN 60 529 ; EN 61439-1
	Glass door: IK08	EN 62208/02:2012	EN 62 262 ; EN 61439-1
	Max Load Capacity	Pl. 900Kg	EN 62208/02:2012 EN 61439-1
		ELE118311CS	Rina Rules Classification of Ships
		2011/65/CE	1272/2008/CE

* IP66 WITH SINGLE, FLAT GROMMET FLANGE

