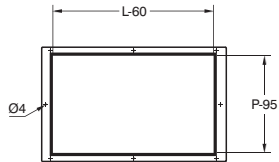
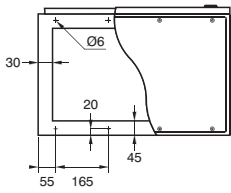
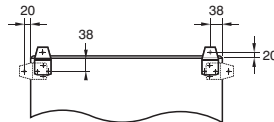


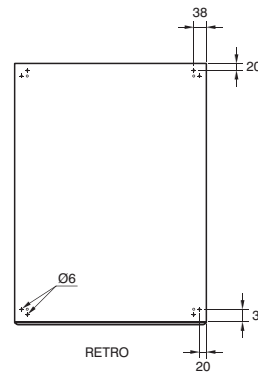
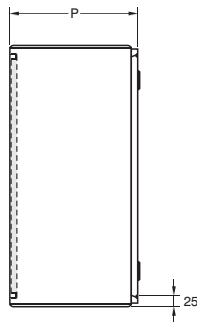
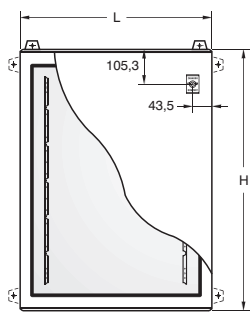
## Cassette D01



FLANGIA INGRESSO CAVI



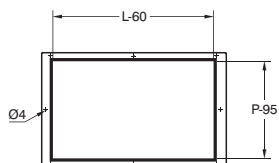
INTERASSE STAFFE FISSAGGIO



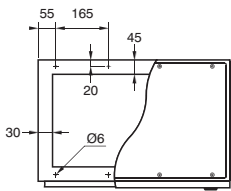
RETRO



PIASTRA INTERNA



FLANGIA INGRESSO CAVI



### DIMENSIONI CASSETTE D01

Anta Unica.....	L-2	H-19
Utile Foratura Anta.....	L-135	H-74
Interasse Foratura Supporti Interno Anta....	L-135	
Piastra Interna Ribordata.....	L-56	H-56
Profondità Utile.....	P-22	
Apertura nel Fondo.....	L-90	P-90
Flangia Ingresso Cavi Sup/Inf.....	L-6	P-40

NB Contattare l'ufficio tecnico per uso esterno

### Una Anta

Codici	H mm	L mm	P mm	Kg	m <sup>3</sup>
D01/4604	614	400	400	22	0,10
D01/6604	614	600	400	28,5	0,14
D01/5704	714	500	400	28,5	0,14
D01/6804	814	600	400	36	0,19
D01/6104	1014	600	400	43	0,24
D01/8104	1014	800	400	52	0,32
D01/6124	1214	600	400	50	0,29
D01/8124	1214	800	400	61	0,39
D01/6144	1414	600	400	57	0,34
D01/8144	1414	800	400	70	0,45

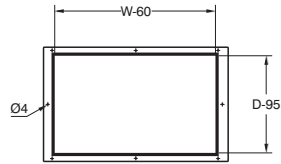
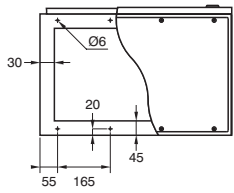
le misure sono espresse in mm

### OMOLOGAZIONI

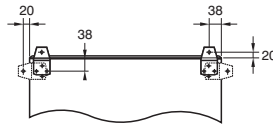
CE		EN 62208/02:2012	EN 61439-1
	IP 66	EN 62208/02:2012	EN 60 529 ; EN 61439-1
TUV	Anta cieca: IK10	EN 62208/02:2012	EN 62 262 ; EN 61439-1
	Max Load Capacity	PI. 200+250Kg Anta 50Kg	EN 62208/02:2012 EN 61439-1
RoHS		2011/65/CE	1272/2008/CE

i dati tecnici possono essere soggetti a cambiamenti senza preavviso

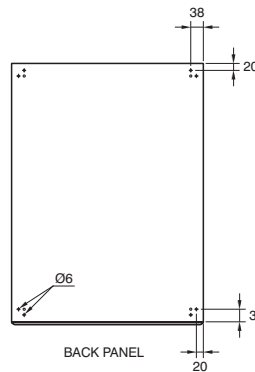
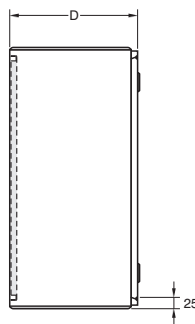
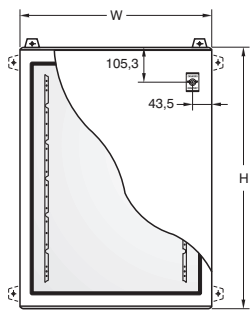
## D01 boxes



CABLE ENTRY FLANGE



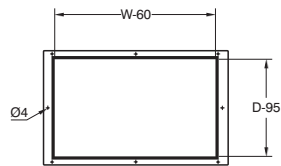
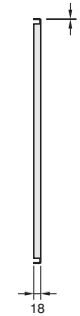
FIXING BRACKETS SPACING



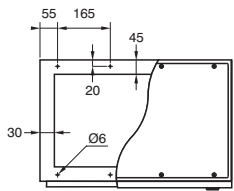
BACK PANEL



INTERNAL PLATE



CABLE ENTRY FLANGE



**NB Contact the technical department for external use**

### D01 BOXES DIMENSIONS

Single Door.....	W-2 H-19
Door Drill Dimensions.....	W-135 H-74
Internal Door Supports Drill Spacing.....	W-135
Bordered Internal Plate.....	W-56 H-56
Drill Depth.....	D-22
Bottom Opening.....	W-90 D-90
Top/Bottom Cable Entry Flange.....	W-6 D-40

### Single Door

Codes	H mm	W mm	D mm	Kg	m <sup>3</sup>
D01/4604	614	400	400	22	0,10
D01/6604	614	600	400	28,5	0,14
D01/5704	714	500	400	28,5	0,14
D01/6804	814	600	400	36	0,19
D01/6104	1014	600	400	43	0,24
D01/8104	1014	800	400	52	0,32
D01/6124	1214	600	400	50	0,29
D01/8124	1214	800	400	61	0,39
D01/6144	1414	600	400	57	0,34
D01/8144	1414	800	400	70	0,45

dimensions are in mm

### APPROVALS

CE		EN 62208/02:2012	EN 61439-1
	<b>IP 55</b>	EN 62208/02:2012	EN 60 529 ; EN 61439-1
	Solid door: <b>IK10</b>	EN 62208/02:2012	EN 62 262 ; EN 61439-1
	Max Load Capacity	Pl. <b>200÷250Kg</b>	EN 62208/02:2012 EN 61439-1
		Door <b>50Kg</b>	
		2011/65/CE	1272/2008/CE

technical data subject to change without notice