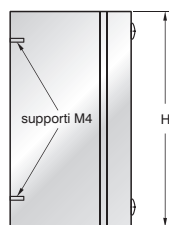
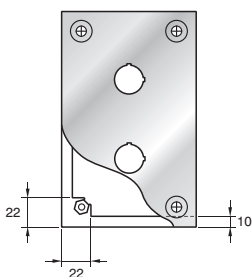
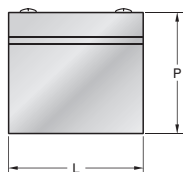


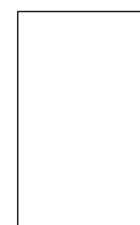
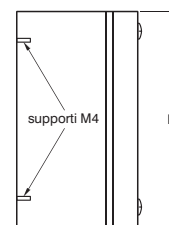
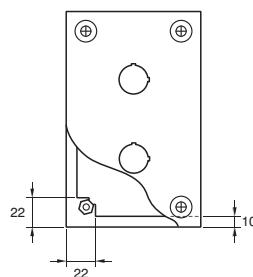
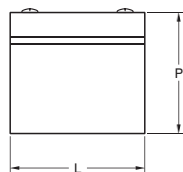
# dati tecnici: cassette ES-PU con coperchio forato

## Cassette ES-PU A acciaio inox



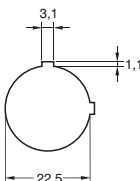
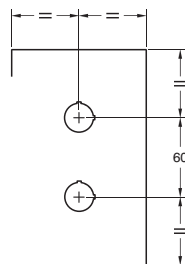
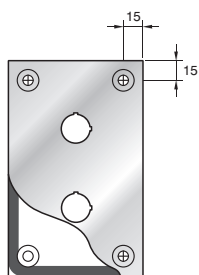
RETRO

## Cassette ES-PU verniciate

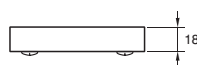
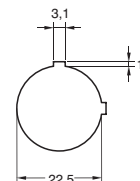
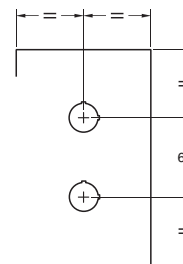
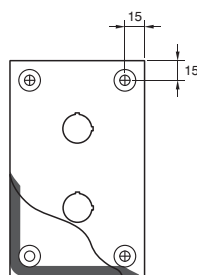


RETRO

## Coperchio ES-PU A



## Coperchio ES-PU verniciato



**NB Contattare l'ufficio tecnico per uso esterno**

### DIMENSIONI CASSETTE ES-PU (inox e verniciate)

Utile Foratura Coperchio.....L-30 H-30  
 Profondità Utile.....P-3  
 Interasse Supporti Interni.....H-46

### OMOLOGAZIONI

CE		EN 62208/02:2012	EN 61439-1
TUV	IP 66	EN 62208/02:2012	EN 60 529 ; EN 61439-1
	IK10	EN 62208/02:2012	EN 62 262 ; EN 61439-1
UL	TYPE 1, 12, 4, 4X	FILE E238294	Standard 508
	NEMA 1, 12, 4, 4X	FILE E238294	Standard 250
		ELE118311CS	Rina Rules Classification of Ships
RoHS		2011/65/CE	1272/2008/CE

### Coperchio Avvitato Acciaio Inox

Codici	H mm	L mm	P mm	Kg	m <sup>3</sup>
ES-PU886/1A	80	80	60	0,5	0,001
ES-PU10109/1A	100	100	90	0,6	0,002
ES-PU16109/2A	160	100	90	1,1	0,003
ES-PU22109/3A	220	100	90	1,5	0,004
ES-PU28109/4A	280	100	90	1,8	0,005

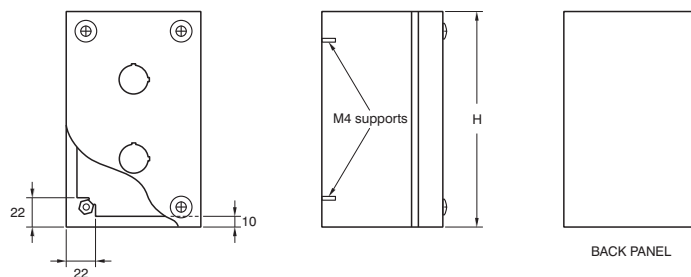
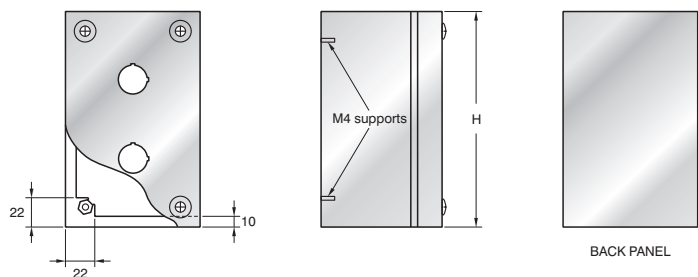
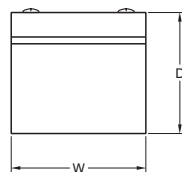
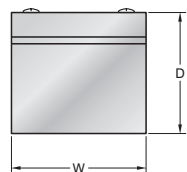
### Coperchio Avvitato Lamiera Verniciata

Codici	H mm	L mm	P mm	Kg	m <sup>3</sup>
ES-PU886/1	80	80	60	0,5	0,001
ES-PU10109/1	100	100	90	0,6	0,002
ES-PU16109/2	160	100	90	1,1	0,003
ES-PU22109/3	220	100	90	1,5	0,004
ES-PU28109/4	280	100	90	1,8	0,005

# technical data: ES-PU A stainless-steel boxes with drilled cover

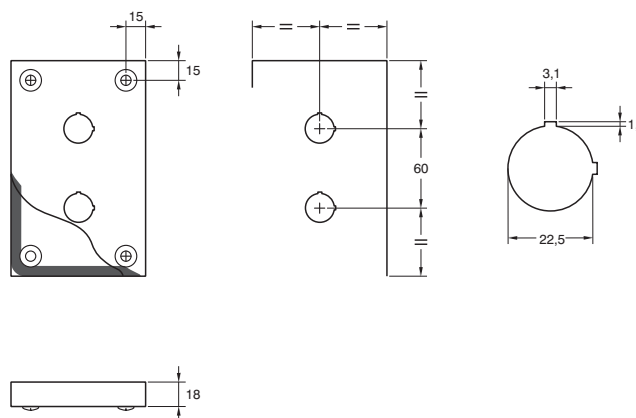
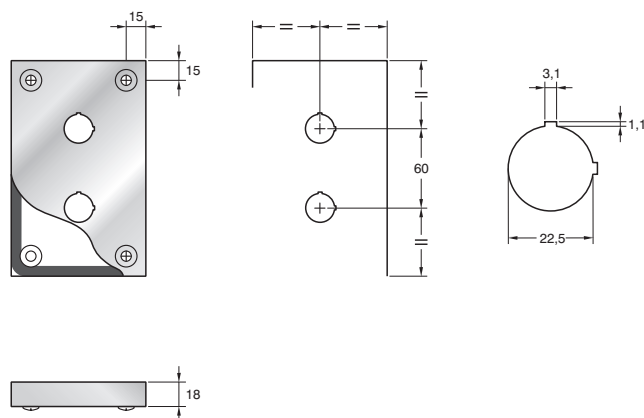
## ES-PU A stainless-steel boxes

## ES-PU A Painted Sheet boxes



## ES-PU A cover

## ES-PU A cover



NB Contact the technical department for external use

### ES-PU A BOXES DIMENSIONS

Cover Drill Dimensions.....W-30 H-30  
 Drill Depth.....D-3  
 Internal Support Spacing.....H-46

### APPROVALS

CE		EN 62208/02:2012	EN 61439-1
TUV	IP 66	EN 62208/02:2012	EN 60 529 ; EN 61439-1
	IK10	EN 62208/02:2012	EN 62 262 ; EN 61439-1
UL	TYPE 1, 12, 4, 4X	FILE E238294	Standard 508
	NEMA 1, 12, 4, 4X	FILE E238294	Standard 250
		ELE118311CS	Rina Rules Classification of Ships
RoHS		2011/65/CE	1272/2008/CE

### Fixed Cover in Stainless-steel

Codes	H mm	W mm	D mm	Kg	m <sup>3</sup>
ES-PU886/1A	80	80	60	0,5	0,001
ES-PU10109/1A	100	100	90	0,6	0,002
ES-PU16109/2A	160	100	90	1,1	0,003
ES-PU22109/3A	220	100	90	1,5	0,004
ES-PU28109/4A	280	100	90	1,8	0,005

### Fixed Cover in Painted Sheet

Codes	H mm	W mm	D mm	Kg	m <sup>3</sup>
ES-PU886/1	80	80	60	0,5	0,001
ES-PU10109/1	100	100	90	0,6	0,002
ES-PU16109/2	160	100	90	1,1	0,003
ES-PU22109/3	220	100	90	1,5	0,004
ES-PU28109/4	280	100	90	1,8	0,005