

ARMADI KA

Sistema economico di armadi componibili, adatti alla realizzazione di combinazioni in batteria.

- Robusta struttura di montanti trafilati è direttamente saldata alla base inferiore e al tetto.
- Base inferiore con flangia ingresso cavi.
- Laterali e retro avvitati.
- Piastra interna in 2,5 mm FeZn regolabile.
- Disponibile nelle configurazioni ad anta cieca o trasparente, con e senza anta interna.
- Predisposizione per applicazione zoccoli.
- Accessori comuni al sistema DRC.

 **NOTA:** Quadri elettrici adatti all'uso interno, per applicazioni esterne contattare il nostro ufficio tecnico.



Grado di Protezione e Approvazioni:

IP66 CEI EN 62 208 / CEI EN 60529 per uso interno
IK10 CEI EN 62 208 / CEI EN 62262



Verniciatura:

A polveri termoidurenti

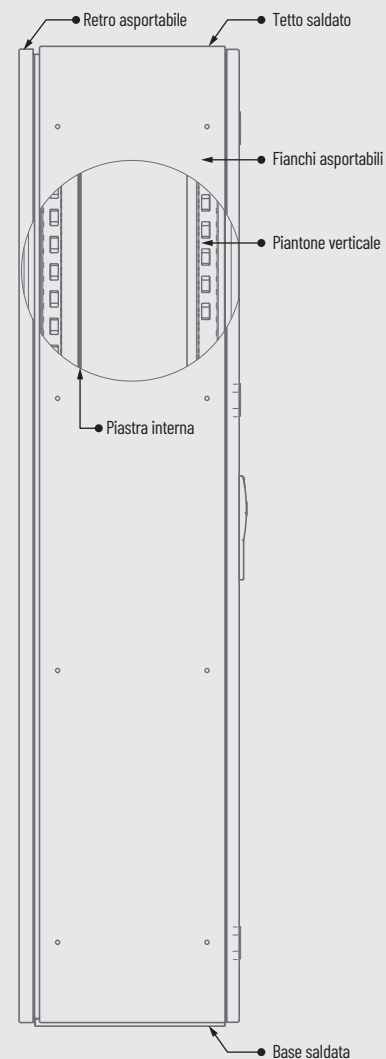
Colori standard:

RAL 7035 bucciato

Zoccolo: RAL 7009 bucciato

Materiale:

Lamiera d'acciaio al carbonio, sp. 1,5/1,8 mm



SERVIZI SU RICHIESTA

Tutte le modifiche su richiesta possono incidere su certificazioni e dichiarazioni di conformità standard esistenti.

Tutte le richieste di personalizzazione devono essere specificate e definite al momento dell'ordine e non possono subire variazioni dopo la conferma di quest'ultimo.

I dati tecnici possono essere soggetti a cambiamenti senza preavviso.

 Premontaggio
accessori

 Verniciatura

 Foratura

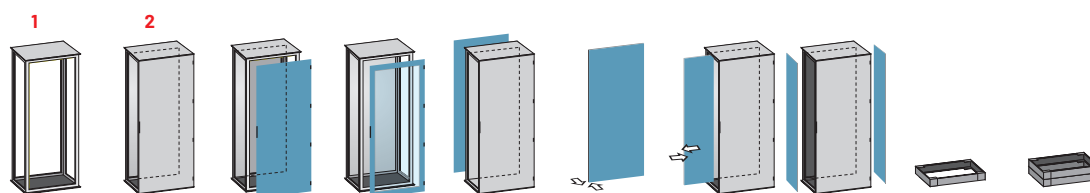
 Personalizzazione

ARMADI

KA

1 Ordinare separatamente: zoccolo, anta, piastra interna, retro e laterali.

2 Ordinare separatamente: zoccolo e laterali (la piastra interna è inclusa).



Dimensioni (mm)			KA SS	KA	Anta	Anta	Retro	Piastra	Piastra	Laterali	Zoccolo	Zoccolo	
H	L	P	struttura con base e tetto avvitati	anta cieca piastra interna retro	cieca	vetro		interna	interna con inserimento laterale	coppia	H 100	H 200	
1400	600	400	KA6144SS	KA6144	VFR801	VFR801P	VFR811	VFR101	DRC235	KA1440	DRC601	DRC621	
		500	KA6145SS	KA6145	VFR801	VFR801P	VFR811	VFR101	DRC235	KA1450	DRC602	DRC622	
		600	KA6146SS	KA6146	VFR801	VFR801P	VFR811	VFR101	DRC235	KA1460	DRC603	DRC623	
	800	400	KA8144SS	KA8144	VFR802	VFR802P	VFR812	VFR102	DRC236	KA1440	DRC606	DRC626	
		500	KA8145SS	KA8145	VFR802	VFR802P	VFR812	VFR102	DRC236	KA1450	DRC607	DRC627	
		600	KA8146SS	KA8146	VFR802	VFR802P	VFR812	VFR102	DRC236	KA1460	DRC608	DRC628	
	1200	400	KA12144SS	KA12144	VFR806	VFR806P	VFR816	VFR106	DRC237	KA1440	DRC616	DRC636	
		500	KA12145SS	KA12145	VFR806	VFR806P	VFR816	VFR106	DRC237	KA1450	DRC617	DRC637	
		600	KA12146SS	KA12146	VFR806	VFR806P	VFR816	VFR106	DRC237	KA1460	DRC618	DRC638	
1600	400	400	KA4164SS	KA4164	VFR808	-	VFR818	VFR108	DRC249	KA1640	DRC557	DRC562	
		500	KA4165SS	KA4165	VFR808	-	VFR818	VFR108	DRC249	KA1650	DRC558	DRC563	
		600	KA4166SS	KA4166	VFR808	-	VFR818	VFR108	DRC249	KA1660	DRC559	DRC564	
	600	400	KA6164SS	KA6164	VFR803	VFR803P	VFR813	VFR103	DRC238	KA1640	DRC601	DRC621	
		500	KA6165SS	KA6165	VFR803	VFR803P	VFR813	VFR103	DRC238	KA1650	DRC602	DRC622	
		600	KA6166SS	KA6166	VFR803	VFR803P	VFR813	VFR103	DRC238	KA1660	DRC603	DRC623	
	800	400	KA8164SS	KA8164	VFR804	VFR804P	VFR814	VFR104	DRC239	KA1640	DRC606	DRC626	
		500	KA8165SS	KA8165	VFR804	VFR804P	VFR814	VFR104	DRC239	KA1650	DRC607	DRC627	
		600	KA8166SS	KA8166	VFR804	VFR804P	VFR814	VFR104	DRC239	KA1660	DRC608	DRC628	
	1000	400	KA10164SS	KA10164	VFR805	VFR805P	VFR815	VFR105	DRC240	KA1640	DRC611	DRC631	
		500	KA10165SS	KA10165	VFR805	VFR805P	VFR815	VFR105	DRC240	KA1650	DRC612	DRC632	
		600	KA10166SS	KA10166	VFR805	VFR805P	VFR815	VFR105	DRC240	KA1660	DRC613	DRC633	
	1200	400	KA12164SS	KA12164	VFR807	VFR807P	VFR817	VFR107	DRC241	KA1640	DRC616	DRC636	
		500	KA12165SS	KA12165	VFR807	VFR807P	VFR817	VFR107	DRC241	KA1650	DRC617	DRC637	
		600	KA12166SS	KA12166	VFR807	VFR807P	VFR817	VFR107	DRC241	KA1660	DRC618	DRC638	
	1800	400	400	KA4184SS	KA4184	VFR798	-	VFR793	VFR100	DRC243	KA1840	DRC557	DRC562
			500	KA4185SS	KA4185	VFR798	-	VFR793	VFR100	DRC243	KA1850	DRC558	DRC563
			600	KA4186SS	KA4186	VFR798	-	VFR793	VFR100	DRC243	KA1860	DRC559	DRC564
600		800	KA4188SS	KA4188	VFR798	-	VFR793	VFR100	DRC243	KA1880	DRC560	DRC565	
		400	KA6184SS	KA6184	DRC801	DRC801P	DRC811	DRC101	DRC217	KA1840	DRC601	DRC621	
		500	KA6185SS	KA6185	DRC801	DRC801P	DRC811	DRC101	DRC217	KA1850	DRC602	DRC622	
800		600	KA6186SS	KA6186	DRC801	DRC801P	DRC811	DRC101	DRC217	KA1860	DRC603	DRC623	
		800	KA6188SS	KA6188	DRC801	DRC801P	DRC811	DRC101	DRC217	KA1880	DRC604	DRC624	
		400	KA8184SS	KA8184	DRC802	DRC802P	DRC812	DRC102	DRC218	KA1840	DRC606	DRC626	
1000		500	KA8185SS	KA8185	DRC802	DRC802P	DRC812	DRC102	DRC218	KA1850	DRC607	DRC627	
		600	KA8186SS	KA8186	DRC802	DRC802P	DRC812	DRC102	DRC218	KA1860	DRC608	DRC628	
		800	KA8188SS	KA8188	DRC802	DRC802P	DRC812	DRC102	DRC218	KA1880	DRC609	DRC629	
1200		400	KA10184SS	KA10184	DRC803	DRC803P	DRC813	DRC103	DRC219	KA1840	DRC611	DRC631	
		500	KA10185SS	KA10185	DRC803	DRC803P	DRC813	DRC103	DRC219	KA1850	DRC612	DRC632	
		600	KA10186SS	KA10186	DRC803	DRC803P	DRC813	DRC103	DRC219	KA1860	DRC613	DRC633	
1400		800	KA10188SS	KA10188	DRC803	DRC803P	DRC813	DRC103	DRC219	KA1880	DRC614	DRC634	
		400	KA12184SS	KA12184	DRC804	DRC804P	DRC814	DRC104	DRC220	KA1840	DRC616	DRC636	
		500	KA12185SS	KA12185	DRC804	DRC804P	DRC814	DRC104	DRC220	KA1850	DRC617	DRC637	
1600		600	KA12186SS	KA12186	DRC804	DRC804P	DRC814	DRC104	DRC220	KA1860	DRC618	DRC638	
		800	KA12188SS	KA12188	DRC804	DRC804P	DRC814	DRC104	DRC220	KA1880	DRC619	DRC639	
		400	KA14184SS	KA14184	DRC809	DRC809P	DRC819	DRC109	DRC221	KA1840	DRC641	DRC651	
1600		500	KA14185SS	KA14185	DRC809	DRC809P	DRC819	DRC109	DRC221	KA1850	DRC642	DRC652	
		600	KA14186SS	KA14186	DRC809	DRC809P	DRC819	DRC109	DRC221	KA1860	DRC643	DRC653	
		800	KA14188SS	KA14188	DRC809	DRC809P	DRC819	DRC109	DRC221	KA1880	DRC644	DRC654	
1600		400	KA16184SS	KA16184	DRC810	DRC810P	DRC820	DRC110	DRC222	KA1840	DRC646	DRC656	
		500	KA16185SS	KA16185	DRC810	DRC810P	DRC820	DRC110	DRC222	KA1850	DRC647	DRC657	
		600	KA16186SS	KA16186	DRC810	DRC810P	DRC820	DRC110	DRC222	KA1860	DRC648	DRC658	

Continua nelle prossime pagine.

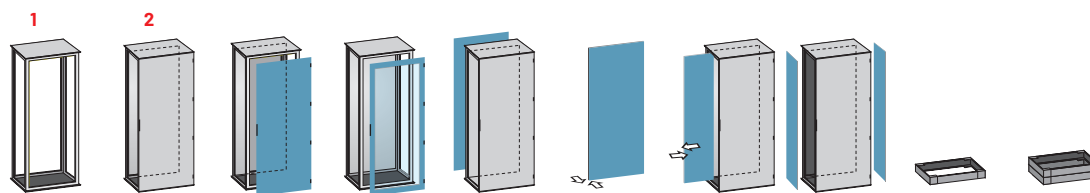
NOTA: Aggiungere il suffisso **.35** al codice d'ordine per verniciatura RAL 7035 bucciato.

ARMADI

KA

1 Ordinare separatamente: zoccolo, anta, piastra interna, retro e laterali.

2 Ordinare separatamente: zoccolo e laterali (la piastra interna è inclusa).



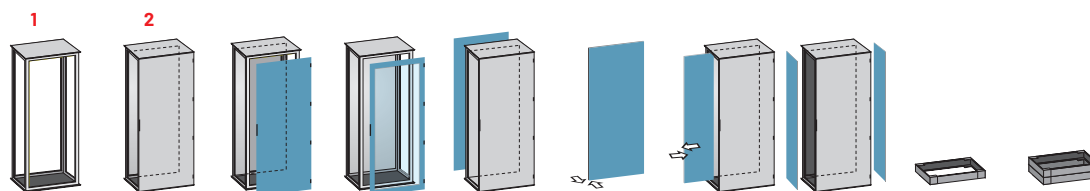
Dimensioni (mm)			KA SS struttura con base e tetto avvitati	KA anta cieca piastra interna retro	Anta cieca	Anta vetro	Retro	Piastra interna	Piastra interna con inserimento laterale	Laterali coppia	Zoccolo H 100	Zoccolo H 200
H	L	P										
2000	400	400	KA4204SS	KA4204	DRC799	-	DRC795	DRC119	DRC242	KA2040	DRC557	DRC562
		500	KA4205SS	KA4205	DRC799	-	DRC795	DRC119	DRC242	KA2050	DRC558	DRC563
		600	KA4206SS	KA4206	DRC799	-	DRC795	DRC119	DRC242	KA2060	DRC559	DRC564
		800	KA4208SS	KA4208	DRC799	-	DRC795	DRC119	DRC242	KA2080	DRC560	DRC565
	600	400	KA6204SS	KA6204	DRC805	DRC805P	DRC815	DRC105	DRC223	KA2040	DRC601	DRC621
		500	KA6205SS	KA6205	DRC805	DRC805P	DRC815	DRC105	DRC223	KA2050	DRC602	DRC622
		600	KA6206SS	KA6206	DRC805	DRC805P	DRC815	DRC105	DRC223	KA2060	DRC603	DRC623
		800	KA6208SS	KA6208	DRC805	DRC805P	DRC815	DRC105	DRC223	KA2080	DRC604	DRC624
	800	400	KA8204SS	KA8204	DRC806	DRC806P	DRC816	DRC106	DRC224	KA2040	DRC606	DRC626
		500	KA8205SS	KA8205	DRC806	DRC806P	DRC816	DRC106	DRC224	KA2050	DRC607	DRC627
		600	KA8206SS	KA8206	DRC806	DRC806P	DRC816	DRC106	DRC224	KA2060	DRC608	DRC628
		800	KA8208SS	KA8208	DRC806	DRC806P	DRC816	DRC106	DRC224	KA2080	DRC609	DRC629
	1000	400	KA10204SS	KA10204	DRC807	DRC807P	DRC817	DRC107	DRC225	KA2040	DRC611	DRC631
		500	KA10205SS	KA10205	DRC807	DRC807P	DRC817	DRC107	DRC225	KA2050	DRC612	DRC632
		600	KA10206SS	KA10206	DRC807	DRC807P	DRC817	DRC107	DRC225	KA2060	DRC613	DRC633
		800	KA10208SS	KA10208	DRC807	DRC807P	DRC817	DRC107	DRC225	KA2080	DRC614	DRC634
	1200	400	KA12204SS	KA12204	DRC808	DRC808P	DRC818	DRC108	DRC226	KA2040	DRC616	DRC636
		500	KA12205SS	KA12205	DRC808	DRC808P	DRC818	DRC108	DRC226	KA2050	DRC617	DRC637
		600	KA12206SS	KA12206	DRC808	DRC808P	DRC818	DRC108	DRC226	KA2060	DRC618	DRC638
		800	KA12208SS	KA12208	DRC808	DRC808P	DRC818	DRC108	DRC226	KA2080	DRC619	DRC639
	1400	400	KA14204SS	KA14204	DRC809/2	DRC809/2P	DRC821	DRC111	DRC227	KA2040	DRC641	DRC651
		500	KA14205SS	KA14205	DRC809/2	DRC809/2P	DRC821	DRC111	DRC227	KA2050	DRC642	DRC652
		600	KA14206SS	KA14206	DRC809/2	DRC809/2P	DRC821	DRC111	DRC227	KA2060	DRC643	DRC653
	1600	400	KA16204SS	KA16204	DRC810/2	DRC810/2P	DRC822	DRC112	DRC228	KA2040	DRC646	DRC656
500		KA16205SS	KA16205	DRC810/2	DRC810/2P	DRC822	DRC112	DRC228	KA2050	DRC647	DRC657	
600		KA16206SS	KA16206	DRC810/2	DRC810/2P	DRC822	DRC112	DRC228	KA2060	DRC648	DRC658	

NOTA: Aggiungere il suffisso **.35** al codice d'ordine per verniciatura RAL 7035 bucciato.

ARMADI KA

1 Ordinare separatamente:
zoccolo, anta, piastra interna,
retro e laterali.

2 Ordinare separatamente:
zoccolo e laterali
(la piastra interna è inclusa).



Dimensioni (mm)			KA SS	KA	Anta	Anta	Retro	Piastra	Piastra	Laterali	Zoccolo	Zoccolo
H	L	P	struttura con base e tetto avvitati	anta cieca piastra interna retro	cieca	vetro		interna	interna con inserimento laterale	coppia	H 100	H 200
2200	400	400	KA4224SS	KA4224	DRC800	-	DRC797	DRC120	DRC244	KA2240	DRC557	DRC562
		500	KA4225SS	KA4225	DRC800	-	DRC797	DRC120	DRC244	KA2250	DRC558	DRC563
		600	KA4226SS	KA4226	DRC800	-	DRC797	DRC120	DRC244	KA2260	DRC559	DRC564
		800	KA4228SS	KA4228	DRC800	-	DRC797	DRC120	DRC244	KA2280	DRC560	DRC565
	600	400	KA6224SS	KA6224	DRC810/3	DRC810/3P	DRC823	DRC113	DRC229	KA2240	DRC601	DRC621
		500	KA6225SS	KA6225	DRC810/3	DRC810/3P	DRC823	DRC113	DRC229	KA2250	DRC602	DRC622
		600	KA6226SS	KA6226	DRC810/3	DRC810/3P	DRC823	DRC113	DRC229	KA2260	DRC603	DRC623
		800	KA6228SS	KA6228	DRC810/3	DRC810/3P	DRC823	DRC113	DRC229	KA2280	DRC604	DRC624
	800	400	KA8224SS	KA8224	DRC810/4	DRC810/4P	DRC824	DRC114	DRC230	KA2240	DRC606	DRC626
		500	KA8225SS	KA8225	DRC810/4	DRC810/4P	DRC824	DRC114	DRC230	KA2250	DRC607	DRC627
		600	KA8226SS	KA8226	DRC810/4	DRC810/4P	DRC824	DRC114	DRC230	KA2260	DRC608	DRC628
		800	KA8228SS	KA8228	DRC810/4	DRC810/4P	DRC824	DRC114	DRC230	KA2280	DRC609	DRC629
	1000	400	KA10224SS	KA10224	DRC810/5	DRC810/5P	DRC825	DRC115	DRC231	KA2240	DRC611	DRC631
		500	KA10225SS	KA10225	DRC810/5	DRC810/5P	DRC825	DRC115	DRC231	KA2250	DRC612	DRC632
		600	KA10226SS	KA10226	DRC810/5	DRC810/5P	DRC825	DRC115	DRC231	KA2260	DRC613	DRC633
		800	KA10228SS	KA10228	DRC810/5	DRC810/5P	DRC825	DRC115	DRC231	KA2280	DRC614	DRC634
	1200	400	KA12224SS	KA12224	DRC810/6	DRC810/6P	DRC826	DRC116	DRC232	KA2240	DRC616	DRC636
		500	KA12225SS	KA12225	DRC810/6	DRC810/6P	DRC826	DRC116	DRC232	KA2250	DRC617	DRC637
		600	KA12226SS	KA12226	DRC810/6	DRC810/6P	DRC826	DRC116	DRC232	KA2260	DRC618	DRC638
		800	KA12228SS	KA12228	DRC810/6	DRC810/6P	DRC826	DRC116	DRC232	KA2280	DRC619	DRC639
	1400	500	KA14225SS	KA14225	DRC810/7	DRC810/7P	DRC827	DRC117	DRC233	KA2250	DRC642	DRC652
		600	KA14226SS	KA14226	DRC810/7	DRC810/7P	DRC827	DRC117	DRC233	KA2260	DRC643	DRC653
	1600	500	KA16225SS	KA16225	DRC810/8	DRC810/8P	DRC828	DRC118	DRC234	KA2250	DRC647	DRC657
		600	KA16226SS	KA16226	DRC810/8	DRC810/8P	DRC828	DRC118	DRC234	KA2260	DRC648	DRC658

NOTA: Aggiungere il suffisso **.35** al codice d'ordine per verniciatura RAL 7035 bucciato.